

# iPSC Characterization Report

## Information Summary

**Organization:** Neural Stem Cell Institute (NSCI)  
**Address:** One Discovery Drive, Rensselaer, NY 12144  
**Contact Person:** Kathryn McIlroy  
**Email:** kathrynmcilroy@neuralsci.org  
**Phone:** 518-694-8188 x 226

**SCRC Code:** NSCI6

**Sample Name:** GIH-6

**Number of the Established iPSC Clones:** 6

### Characterization Performed:

1. Mycoplasma Test
2. Cell authentication Verification
3. Presence of the Pluripotency Marker
4. Spontaneous differentiation via embryoid body (EB) formation
5. Karyotyping

**Qualified iPSC Clones:** C1, C2, C3

# iPSC Characterization Report

## Mycoplasma Test

**Method:** Determination of the mycoplasmal enzyme activity using Lonza MycoAlert Plus Detection kit.

iPSC Clone	NSCI6-C1	NSCI6-C2	NSCI6-C3
Cell passage	P6	P6	P6
B/A Ratio	0.59	0.68	0.58
Mycoplasma	NEG	NEG	NEG
Pass or Fail	Pass	Pass	Pass

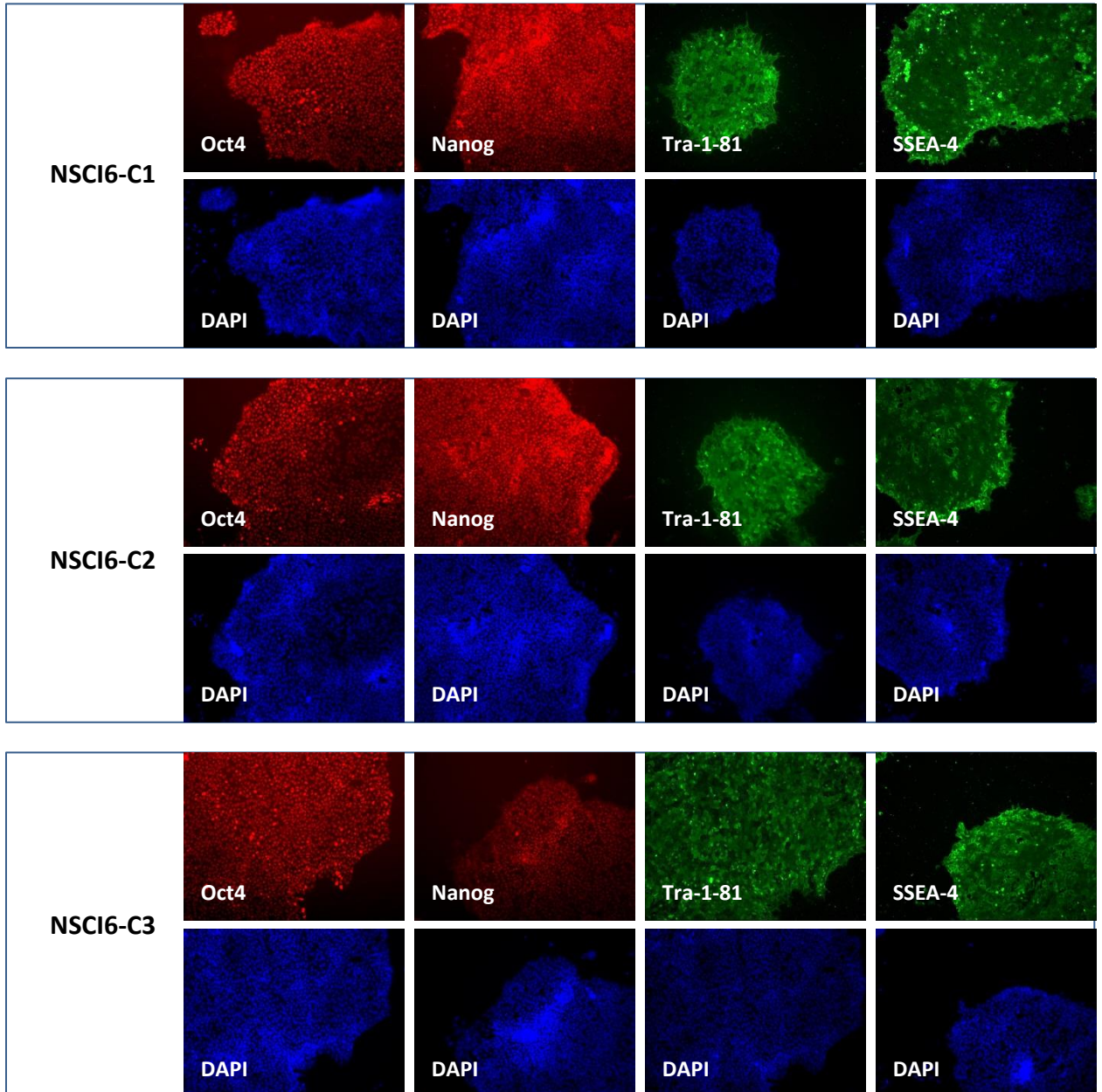
## Cell Authentication Verification

Markers	NSCI6 (GIH-6)	NSCI6-C1	NSCI6-C2	NSCI6-C3
D3S1358	16, 18	16, 18	16, 18	16, 18
TH01	8, 9	8, 9	8, 9	8, 9
D21S11	30	30	30	30
D18S51	17, 18	17, 18	17, 18	17, 18
Penta E	7, 10	7, 10	7, 10	7, 10
D5S818	11, 12	11, 12	11, 12	11, 12
D13S317	10, 12	10, 12	10, 12	10, 12
D7S820	7, 11	7, 11	7, 11	7, 11
D16S539	11, 12	11, 12	11, 12	11, 12
CSF1PO	10, 12	10, 12	10, 12	10, 12
Penta D	12, 14	12, 14	12, 14	12, 14
vWA	14, 15	14, 15	14, 15	14, 15
D8S1179	8, 11	8, 11	8, 11	8, 11
TPOX	8	8	8	8
FGA	22, 23	22, 23	22, 23	22, 23
AMEL	X	X	X	X
<b>Match with original Fibroblast</b>		<b>Yes</b>	<b>Yes</b>	<b>Yes</b>

# iPSC Characterization Report

## Expression of the Pluripotency Markers

Antibody staining for pluripotency markers: Oct4, Nanog, Tra-1-81, SSEA-4



# iPSC Characterization Report

## Differentiation Potential via EB Formation

**Method:** The iPSC cells were disassociated into small clumps to form EB in the low attachment dish. After a 10-day spontaneous differentiation, the EBs were harvested and RNAs were extracted. The expression levels of the selected 3-germ layer specific genes were analyzed by real-time PCR. Ct values are normalized for loading using a housekeeping gene.

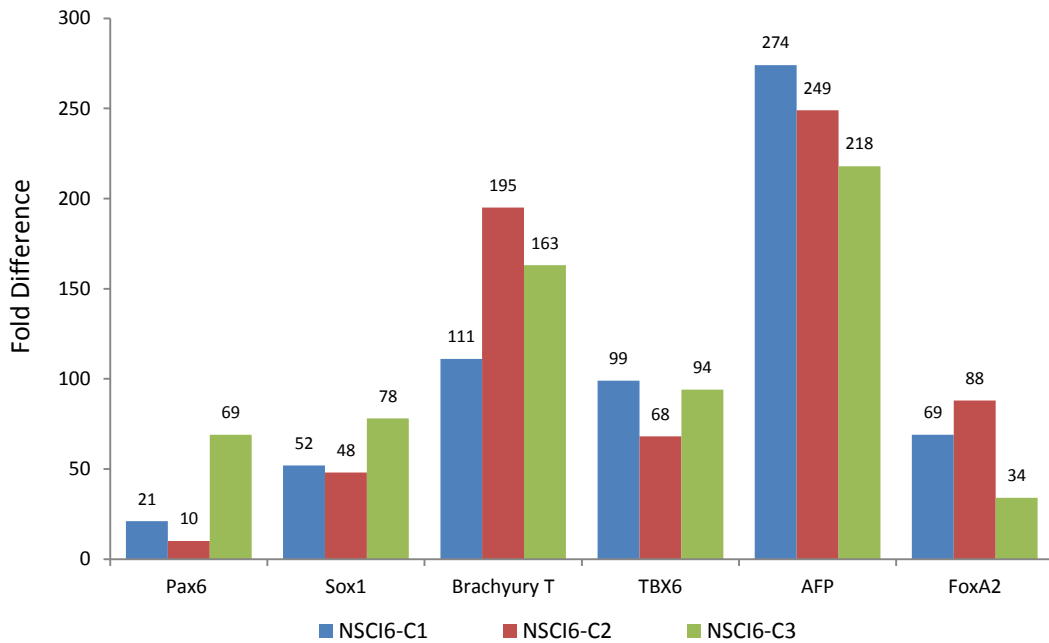


Figure: Lineage specific gene expression following EB differentiation. Fold difference is shown relative to undifferentiated iPS cell.

# iPSC Characterization Report

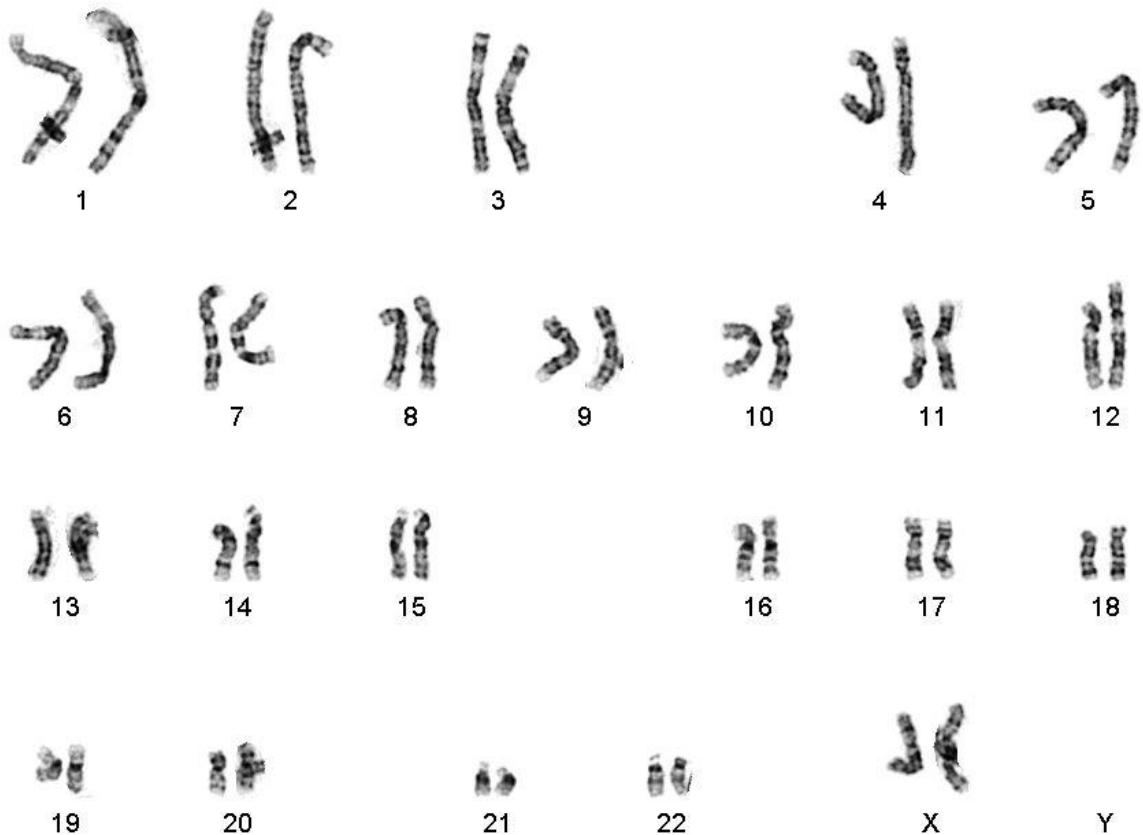
## Karyotyping

**Clone:** NSCI6 (GIH-6)-C1

**Passage:** P7

**Tested:** Number of metaphases counted: 20    Banding and level: GTG/550  
Number of metaphases analyzed: 6    Number of karyotypes: 2

**Result:** 46,XX NORMAL FEMALE KARYOTYPE



# iPSC Characterization Report

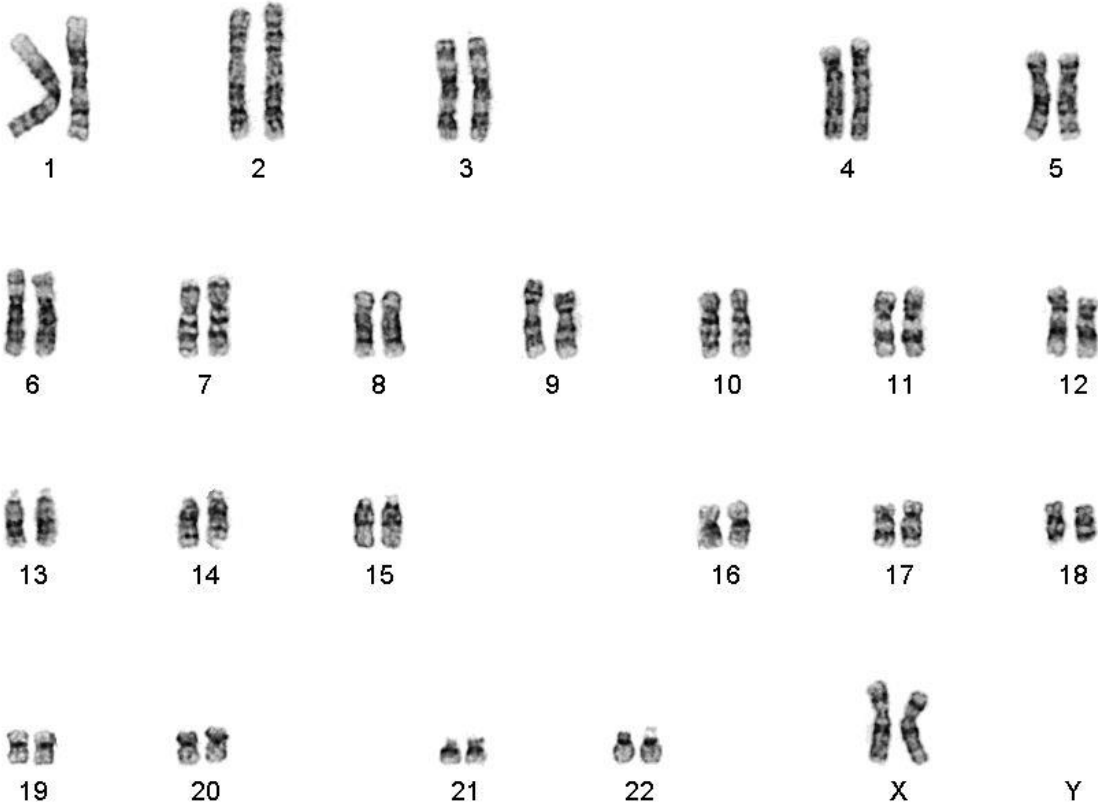
## Karyotyping

**Clone:** NSCI6 (GIH-6)-C2

**Passage:** P7

**Tested:** Number of metaphases counted: 20    Banding and level: GTG/550  
Number of metaphases analyzed: 6    Number of karyotypes: 2

**Result:** 46,XX NORMAL FEMALE KARYOTYPE



# iPSC Characterization Report

## Karyotyping

**Clone:** NSCI6 (GIH-6)-C3

**Passage:** P7

**Tested:** Number of metaphases counted: 20      Banding and level: GTG/450  
Number of metaphases analyzed: 6      Number of karyotypes: 2

**Result:** 46,XX NORMAL FEMALE KARYOTYPE

